

10184 Lab/Cryogenic Product Simulator Sleeve

OVERVIEW

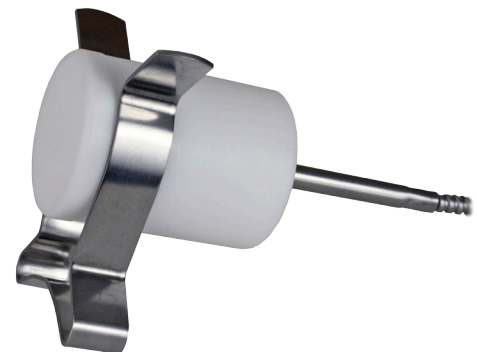
The cryogenic probe measures air temperature in ultra-low freezer environments. The sleeve protects the probe from touching the sides of the freezer, especially when adding or removing product. The sleeve also buffers the temperature response of the probe by providing a protective shroud around the probe tip. This also eliminates any direct metal contact between the probe and freezer wall and effectively makes it a product simulator. Ideal for monitoring the storage of temperature-sensitive products such as genetic material (DNA), donor tissues and allografts for surgical transplantation.

FEATURES	BENEFITS
<ul style="list-style-type: none"> • Accurately simulates product temperature in ambient conditions • Durable virgin electrical grade PTFE material with stainless steel clip • Compact size • Wide temperature range • Certifications: RoHS RoHS 	<ul style="list-style-type: none"> • Minimally affected by ambient air, thus more accurate readings • No worry of breakage, leakage or evaporation • Allows for easy installation, upright or sideways • Ideal for cryogenic applications
SPECIFICATIONS	
<p>#10184 Lab/Cryogenic Product Simulator Sleeve</p> <ul style="list-style-type: none"> • Temperature Range: -200° to 260°C (-328° to 500°F) • Dimensions: 2.5" x 2.625" x 2" (64 mm x 54 mm x 51 mm) • Weight: 5 oz (142 g) • Up to 2 hrs to reach stabilization (with probe) • 1-year warranty 	<p>For Use With: #10134 Lab/Cryogenic RTD Probe (Ruggedized Flexible Armor)</p>

**#10184
Lab/Cryogenic
Product Simulator
Sleeve**



Top view showing insertion hole where probe is to be placed.



10184 with 10134 probe inserted